


61801120	DATA SHEET	
Valid from: 03.07.2018	SILVYN® KLICK GPZ	

SILVYN® KLICK GPZ-M is a one piece polyamide cable/conduit gland, with the double function sealing and strain relief, for corrugated conduits and the cable. The assembling is by the push-in-look simple and is dismantling by moving the lock sleeve.

The gland can be used in the statically and dynamically machine and plant constructions, where cables and lines need an extra strain relief and sealing.



Material: Body - PA
Seal - TPE

Features: Push-In-Look for coarse and fine profile conduits
Simple dismantling by displacing the snap-in sleeve
Fit for high mechanical stress / impact resistant

Temperature range: -40°C up to +115°C

Colour: Grey
Black (UV-resistant)

Norm References:




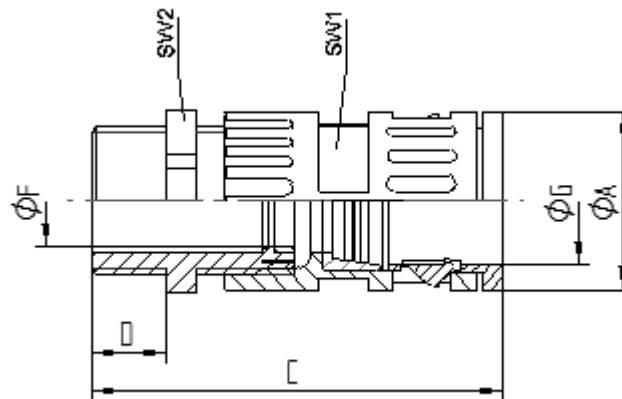
File Nr. E 308201

Note: Self-extinguishing

Protection class: IP 68 acc. to EN 60529
IP 69K Type-tested by VDE acc. to DIN 40050 T9

Creator: M. Wegerer /PDP Released: DAMU1/PDP	Document: DB61801120EN Version: 03	Page 1 of 2
---	---------------------------------------	-------------

61801120	DATA SHEET	
Valid from: 03.07.2018	SILVYN® KLICK GPZ	



Dimension table:

Part number	Type size	Conduit outer Ø G mm	outer Ø A mm	Length of thread D mm	Total- Length C mm	SW1 mm	SW2 mm	Clamping range mm
SILVYN KLICK GPZ-M grey								
6180 1120	PG 7	10	17	8	51	16	15	3,0 – 6,5
6180 1130	PG 9	13	20	8	53	18	19	4,0 – 8,0
6180 1140	PG 11	15,8	23	8	59	21	22	5,0 – 10,0
6180 1200	PG 13,5	15,8	27	9	59	21	24	6,0 – 11,0
6180 1202	PG 13,5	18,5	27	9	59	24	24	6,0 – 12,0
6180 1150	PG 16	21,2	29,5	10	72	27	27	10,0 – 14,0
6180 1160	PG 21	28,5	37	11	82	34	33	13,0 – 18,0
6180 1170	PG 29	34,5	44	11	85	40	42	18,0 – 25,0
6180 1180	PG 36	42,5	58	13	140	55	53	22,0 – 32,0
6180 1190	PG 48	54,5	68	14	144	65	65	34,0 – 44,0
SILVYN KLICK GPZ-M black								
6180 1125	PG 7	10	17	8	51	16	15	3,0 – 6,5
6180 1135	PG 9	13	20	8	53	18	19	4,0 – 8,0
6180 1145	PG 11	15,8	23	8	59	21	22	5,0 – 10,0
6180 1205	PG 13,5	15,8	27	9	59	21	24	6,0 – 11,0
6180 1155	PG 16	21,2	29,5	10	72	27	27	10,0 – 14,0
6180 1165	PG 21	28,5	37	11	82	34	33	13,0 – 18,0
6180 1175	PG 29	34,5	44	11	85	40	42	18,0 – 25,0
6180 1185	PG 36	42,5	58	13	140	55	53	22,0 – 32,0
6180 1195	PG 48	54,5	68	14	144	65	65	34,0 – 44,0

For more information please see our current catalogue. Please do not hesitate to contact our laboratory if there are any questions regarding resistance against aggressive agents and special oil.

Creator: M. Wegerer /PDP Released: DAMU1/PDP	Document: DB61801120EN Version: 03	Page 2 of 2
---	---------------------------------------	-------------