


| | | |
|---------------------------|-----------------------|---|
| 5551 0200 | DATA SHEET |  |
| Valid from: 03.07.2018 | SILVYN® LTPG-M | |

SILVYN® LTPG-M is a Brass-Conduit gland with polyamide sealing for fixed applications. The gland can be used due to his properties in mechanical demanding environments.



Material:

| | |
|---------|----------------------|
| Body | Brass, nickel plated |
| Nut | Brass, nickel plated |
| Sleeve | Brass, nickel plated |
| Sealing | Polyamide |

Technical Features:

| | |
|-------------------|---|
| Connecting thread | M12x1,5 up to M63x1,5 acc. to EN 60423 |
| Nominal width | NW 10 up to NW 63 |
| Protection class | IP66, IP67, IP68 - 5bar and IP69 acc. to EN 60529 |
| Temperature range | Depending on the used conduit -50°C up to +135°C |

Additional features:

Free of halogen, lead and phosphorus
Corrosions resistant

Reference standards:



Suitable conduits:

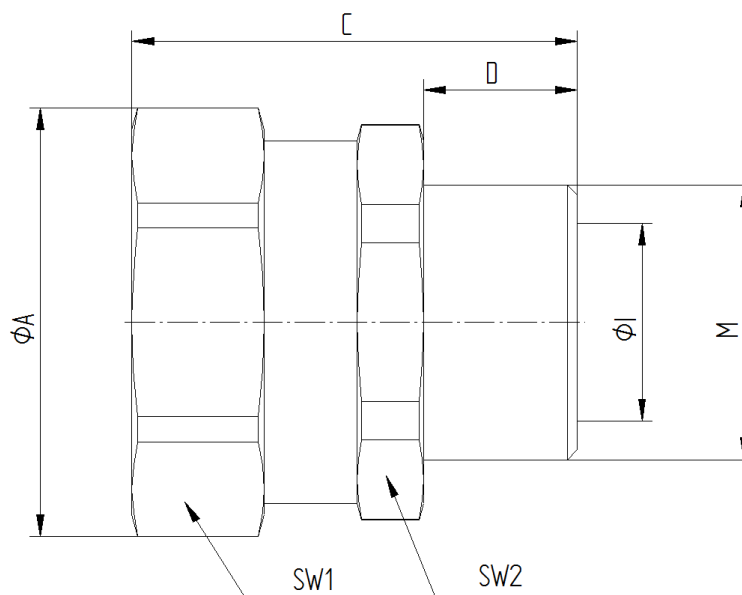
SILVYN® LTP

For more information please see our current catalogue. Please do not hesitate to contact our laboratory if there are any questions regarding resistance against aggressive agents and special oil.

| | | |
|--|---------------------------------------|-------------|
| Creator: MAU1/PDP Released: DAMU1/PDP | Document: DB55510200EN Version: 03 | Page 1 of 2 |
|--|---------------------------------------|-------------|

| | | |
|---------------------------|-----------------------|---|
| 5551 0200 | DATA SHEET |  |
| Valid from: 03.07.2018 | SILVYN® LTPG-M | |

Product drawing:



Dimension table:

| Part No. | Nominal width NW | Thread M | Thread length D mm | Length C mm | Diameter mm | | Wrench size | | Weight g/piece |
|-----------|---------------------|-------------|--------------------------|-------------------|----------------|------|-------------|-----|-------------------|
| | | | | | ØI | ØA | SW1 | SW2 | |
| 5551 0200 | 10 | M12x1,5 | 10,0 | 29,8 | 5,6 | 22,0 | 20 | 20 | 33 |
| 5551 0210 | 12 | M16x1,5 | 10,0 | 29,8 | 8,6 | 26,0 | 24 | 22 | 35 |
| 5551 0220 | 16 | M16x1,5 | 12,0 | 33,0 | 10,7 | 29,0 | 26 | 24 | 44 |
| 5551 0230 | 16 | M20x1,5 | 12,0 | 33,0 | 10,7 | 29,0 | 26 | 24 | 46,6 |
| 5551 0240 | 20 | M20x1,5 | 12,0 | 33,5 | 14,5 | 32,0 | 29 | 26 | 51,8 |
| 5551 0250 | 25 | M25x1,5 | 14,0 | 40,5 | 18,0 | 39,0 | 35 | 33 | 94,5 |
| 5551 0260 | 32 | M32x1,5 | 15,0 | 45,8 | 24,6 | 46,0 | 42 | 40 | 134 |
| 5551 0270 | 40 | M40x1,5 | 16,0 | 47,5 | 32,7 | 57,0 | 52 | 50 | 209,8 |
| 5551 0280 | 50 | M50x1,5 | 18,0 | 53,0 | 37,7 | 64,0 | 58 | 58 | 273 |
| 5551 0290 | 63 | M63x1,5 | 20,0 | 58,8 | 49,0 | 77,0 | 70 | 70 | 430,9 |