


22260573	<b>DATA SHEET</b>	
Valid from: 17.09.2018	<b>AB-C5-M12MS-0,3PUR-AD-2L</b>	

## Description

- Sensor/actuator cable with 2 LEDs, PUR halogen-free
- Connector straight M12, A-coded, 5-pol
- On valve plug AD (pressure switch)



## General characteristics

Connector	M12-plug, A-coded
Number of pins	5
Ambient temperature	-25 to +90 °C (-13°F to 194°F) (connector) -20 to +85 °C (-4°F to 185°F) (valve plug) -40 to +80 °C (-40°F to 176°F) (cable fixed installation) -20 to +80 °C (-4°F to 176°F) (cable flexible)
Degree of protection	IP 65 / IP 67

## Variation

Article	Description	Length [m]
22260570	AB-C5-M12MS-2.0PUR-AD-2L	2.0
22260571	AB-C5-M12MS-1.0PUR-AD-2L	1.0
22260572	AB-C5-M12MS-0.6PUR-AD-2L	0.6
22260573	AB-C5-M12MS-0.3PUR-AD-2L	0.3

### Additional note


This datasheet is also valid for other length configurations. Other lengths upon request.

## Mechanical properties

### Plug

Inflammability class according to UL 94	V0
Contact	CuSn
Contact surface	Ni / Au
Contact carrier	TPU GF
Handle body	TPU
Contact valve plug	CuSn
Contact surface valve plug	Sn
Contact insert valve plug	PA 6
Housing valve plug	TPU
Knurl	Zinc diecasting, nickel-plated
Seal	TPU (seal injected)
Tightening torque	0.4 Nm (M12-connector) 0.6 Nm (valve plug connector)

Creator: ERTC1/PDP Released: IVSE1/PDP	Document: DB22260573EN Version: 04	Page 1 of 3
---	---------------------------------------	-------------

22260573	<b>DATA SHEET</b>	
Valid from: 17.09.2018	<b>AB-C5-M12MS-0,3PUR-AD-2L</b>	

### Line

Conductor diameter including isolation	1.5 mm ± 0.05 mm (signal line)
Cable outer diameter	5.3 mm ± 0.02 mm
Core identification	Black 1, black 2, black 3, black 4, green / yellow
Sheath colour	Black grey RAL 7021
Bending radius	50 mm
Number of bending cycle	15000000
Traveling distance	0.9 m
Travel speed	5 m/s
Acceleration	30 m/s <sup>2</sup>
Outer coating, material	PUR
Wire insulation, material	PP
Flame resistance	Acc. UL-Style 20549
Halogen-free	Acc. DIN VDE 0472 part 815

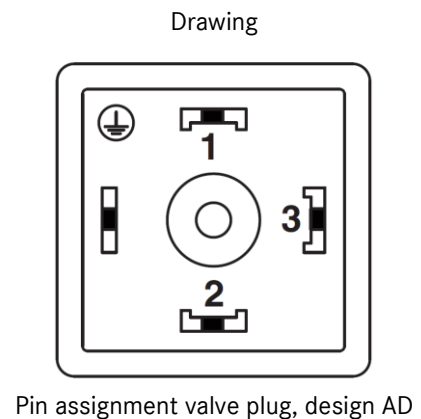
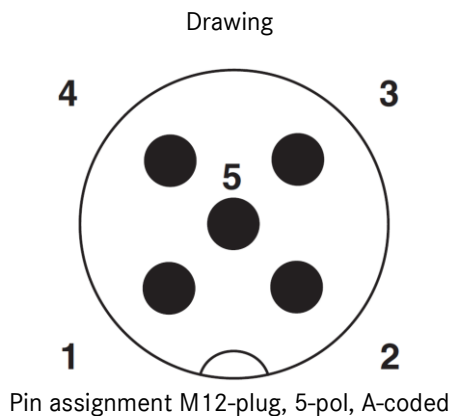
### Electrical properties

Rated voltage	24 V
Rated current at 40 °C	4 A
Overvoltage category	II
Pollution degree	3


### Standards / Approvals

Product standard, M12 connector	IEC 61076-2-101
Valve connectors	EN 175301-803

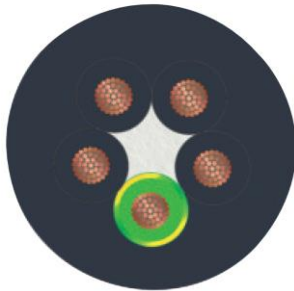
### Technical drawing



Creator: ERTC1/PDP Released: IVSE1/PDP	Document: DB22260573EN Version: 04	Page 2 of 3
---	---------------------------------------	-------------

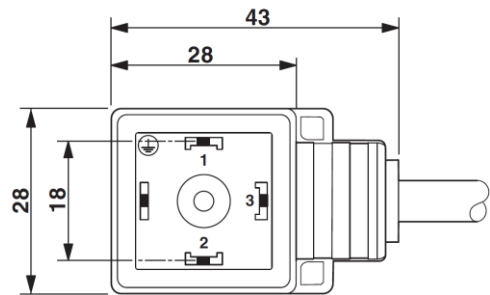
22260573	<b>DATA SHEET</b>	
Valid from: 17.09.2018	<b>AB-C5-M12MS-0,3PUR-AD-2L</b>	

Wire cross section



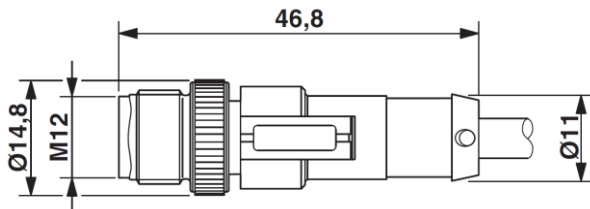
PUR Halogen-free black

Dimensional drawing



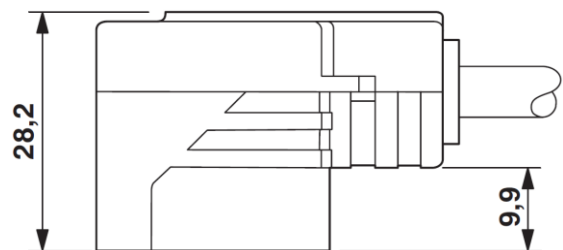
Valve plug, design AD

Dimensional drawing



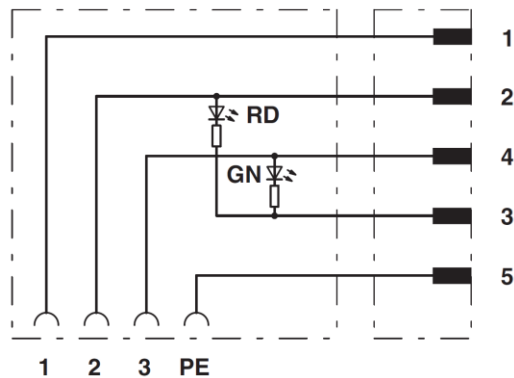
Plug M12 SPEEDCON, straight

Dimensional drawing



Valve plug, design AD

Circuit diagram



Contact the M12 connector and the valve plug

### Application range

Automation, industrial machinery and plant engineering

### Note

Photographs are not true to scale and do not represent detailed images of the respective products.

Creator: ERTC1/PDP Released: IVSE1/PDP	Document: DB22260573EN Version: 04	Page 3 of 3
---	---------------------------------------	-------------