
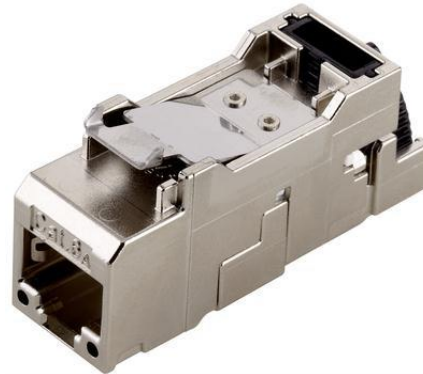


21700611	<b>DATA SHEET</b>	
Valid from: 21.04.2022	<b>ED-IE-AX-RJ45F-6A-A-FC</b>	

## Product description

- Field mountable Industrial Ethernet RJ45-jack with color coding acc. to T568A
- Connector according to IEC 60603-7-5
- suitable for industrial applications, for structured cabling for office building applications, data centers and home networks



## General properties

Ambient temperature	-40 to +70 °C
Protection degree	IP 20
Outer diameter, cable	5.0 – 9.0 mm
Outer diameter, wire	0.9 – 1.6 mm
Termination cross section, stranded, 7 wires	AWG27/7 – AWG22/7
Termination cross section, solid	AWG26/1 – AWG22/1

## Mechanical properties

Insertion force	≤ 30 N
Mating cycles	≥ 750

## Electrical properties

Rated voltage	60 VDC (max.)
Contact resistance	≤ 20 mΩ
Insulation resistance	≥ 500 MΩ
Proof voltage, contact-contact	≥ 1000 V, DC
Proof voltage, contact-shield	≥ 1500 V, DC
Current carrying capacity at 50 °C	1 A
Suitable for Power over Ethernet+ acc. to IEEE 802.3at	yes
Suitable for Power over Ethernet 4PPoE acc. to IEEE 802.3bt	yes


## Transmission properties

Category (ISO)	6
----------------	---

## Materials

Inflammability class according to UL 94	V0
Connector housing, material	Zink diecast Ni plated
Stop hook, material	Stainless steel
Snap arm for cable trap, material	PC black
Slide for shield contact, material	PC black
Shield, material	German silver
Wire pair presorting, material	PBT nature
Insulating plate, material	PC white
Insulation body, material	PC white
PCB, material	FR4, tin-plated

Creator: MANA2/PDP	Document: DB21700611EN	Page 1 of 2
Released: IVSE1/PDP	Version: 05	

21700611	<b>DATA SHEET</b>	
Valid from: 21.04.2022	<b>ED-IE-AX-RJ45F-6A-A-FC</b>	

Contact spring, material  
IDC, material

Spring steel, gold plated  
Copper alloy, tin-plated

### Standards

Product standard, RJ45-connector  
Generic cable systems

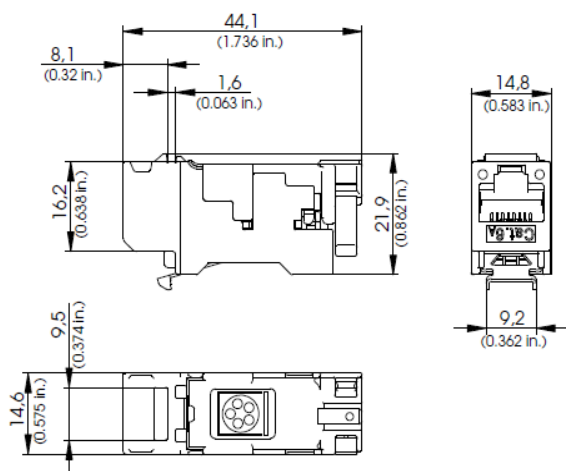
IEC 60603-7-51  
ISO/IEC 11801  
DIN EN 50173-1

### Approvals

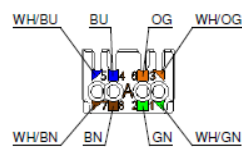
UL listed, E-File

DUXR.E353543

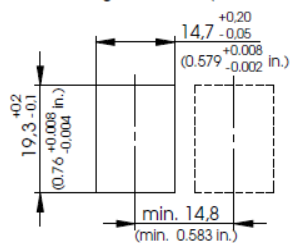
### Drawings



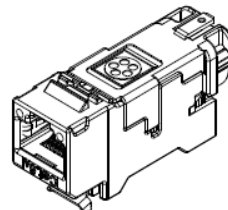
Anschlussbelegung / PIN assignment T568A  
nach / according to TIA/EIA 568-C.2



Einbaumaße (max. und min.)  
mounting dimensions (max. and min.)



Materialdicke 1,6±0,05 mm  
wall thickness 1,6±0,05 mm (0.063±0.002 in.)



### Application range

Automation, industrial machinery and plant engineering

### Note

Photographs are not true to scale and do not represent detailed images of the respective products.

Creator: MANA2/PDP Released: IVSE1/PDP	Document: DB21700611EN Version: 05	Page 2 of 2
---	---------------------------------------	-------------