


70250260	DATA SHEET	
Valid from: 19.10.2018	EPIC® H-B 24 TGH 2xM40	

Description

- Industrial standard
- Ideal for many applications due to a wide range of housings and inserts



General Characteristics

Series	H-B 24
Version	Hood 2x M40
Locking	Bolts for double lever
Cable gland	No
Cable entry	2 Straight
Protection (DIN EN 60529)	IP 65 (mated and locked)
Protection (NEMA 250, UL50E)	12 (mated and locked)
Temperature Range	-40°C to +100°C, temporary up to +125°C

Materials and Surfaces

Housing	Powder coated aluminium alloy, grey
Bolts	Zinc-plated steel

Approvals

VDE-Approval, VDE-REG.-Nr.	B437
UL-File Number	E75770

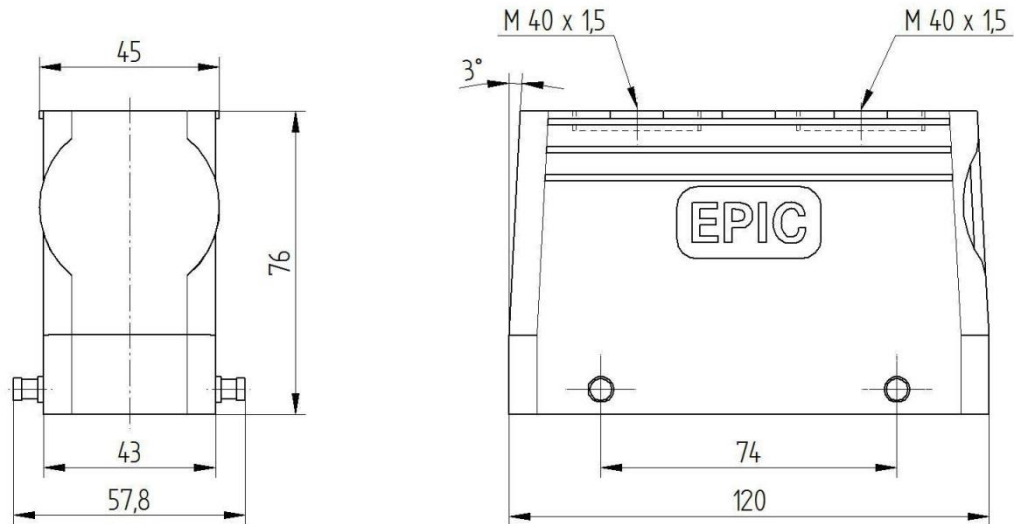
Standard

Safety Standard	IEC 61984; UL 1977
-----------------	--------------------

Creator: STKU3/PDP Released: IVSE1/PDP	Document: DB70250260EN Version: 00	Page 1 of 2
---	---------------------------------------	-------------

70250260	DATA SHEET	
Valid from: 19.10.2018	EPIC® H-B 24 TGH 2xM40	

Technical Drawings



Automation



Industrial machinery and plant engineering



Mechanical resistance



Robust



Waterproof

Info

Universal, robust metal housings size H-B 24

Application range

Plant engineering
Light & sound technology
Plastics industry

Remark

Photographs are not to scale and do not represent detailed images of the respective products.

Creator: STKU3/PDP Released: IVSE1/PDP	Document: DB70250260EN Version: 00	Page 2 of 2
---	---------------------------------------	-------------