


10381200	<b>DATA SHEET</b>	
Valid from: 17.09.2018	<b>EPIC® MCR 10 M / MCR 10 F</b>	

## Description

- The mixed assembly guarantees high flexibility. For applications in mechanical and plant engineering, for printing machines and slide-in technology.
- Assembly of individual connectors, suitable for different applications



## General Characteristics

Series	MCR Frame
Version	Male / Female (Article 10381300)
Number of Modules	3

## Materials and Surfaces

Frame	PA
Flammability Class according to UL 94	V0


## Approvals

UL-Approval, E-File-Number	E75770
VDE-Approval, VDE-REG.-Nr.	B437

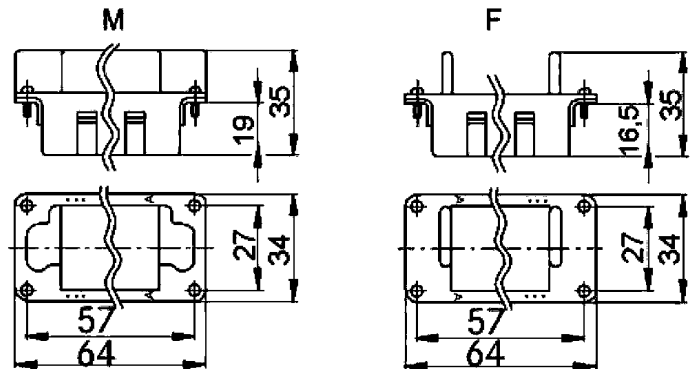
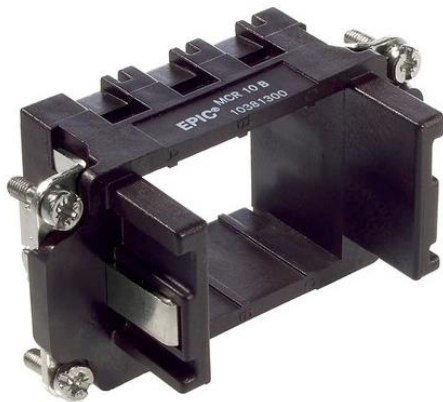
## Standard

Safety Standard	IEC 61984, UL 1977
-----------------	--------------------

Creator: MANA2/PDP Released: IVSE1/PDP	Document: DB10381200EN Version: 01	Page 1 of 2
---	---------------------------------------	-------------

10381200	<b>DATA SHEET</b>	
Valid from: 17.09.2018	<b>EPIC® MCR 10 M / MCR 10 F</b>	

## Technical Drawing



Automation



Industrial machinery and plant engineering



Wind Energy

### Info

Frame system for modules  
Various functions can be used together in one connector

### Product features

The MCR "male" frame version is designed for use with modules with male contacts; the "female" version is designed for use with modules with female contacts

### Remark

Photographs are not to scale and do not represent detailed images of the respective products.

Creator: MANA2/PDP Released: IVSE1/PDP	Document: DB10381200EN Version: 01	Page 2 of 2
---	---------------------------------------	-------------