
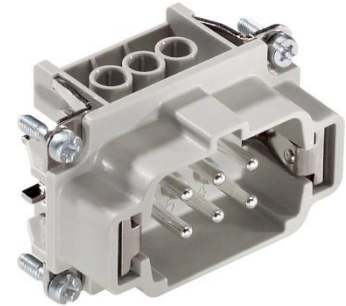


10190000	<b>DATA SHEET</b>	
Valid from: 31.05.2023	<b>EPIC® H-BE 6 SS / H-BE 6 BS DR</b>	

## Description

- Standard inserts with screw termination, crimp termination, cage clamp termination and Push-In termination
- The EPIC® H-BE series is suitable for applications that require a reliable connection when working with high voltages and currents
- Use for railway applications -Brand protection in rail vehicles: test according to EN 45545-2. Requirement sentences R22 and R23. Hazard levels HL1, HL2 and HL3.
- UL tested for control cabinet applications with high SCCR ratings in accordance with UL 508 / UL 2237



## General Characteristics

Series	H-BE 6
Version	Male: 10190000; Female: 10191000
Wire Protection	Yes
Number of Contacts	6 + PE
Termination Methods	Screw termination: 0.5 - 2.5 mm <sup>2</sup>
Protection (DIN EN 60529)	IP65
Protection (NEMA 250, UL50E)	4, 12
Temperature Range	-40°C to +100°C, short-term up to +125°C

## Mechanical Characteristics

Cycle of mechanical operation	500
-------------------------------	-----

## Electrical Characteristics

Rated Voltage, IEC	500 V
Rated Voltage, UL	600 V
Rated Voltage, CSA	600 V
Rated Impulse Voltage	6 kV
Rated Current, IEC	16 A
Rated Current, UL	16 A
Rated Current, CSA	16 A
Contact Resistance	< 2 mOhm
Degree of Soiling	3
SSCR	See <a href="#">PVVA2:E483837</a>

## Materials and Surfaces

Contacts	Copper alloy, hard silver-plated
Insulating Body	PC
Flammability Class according to UL 94	V0


## Approvals

UL-Approval, E-File-Number	E75770, E483837
VDE-Approval, VDE-REG.-Nr.	B437

## Standard

Safety/Application Standard	IEC 61984, UL 1977, CSA22.2 182.3, UL 2237
-----------------------------	--

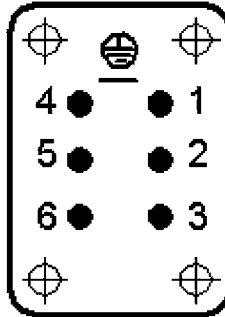
Creator: THBO1/PDP Released: IVSE1/PDP	Document: DB10190000EN Version: 06	Page 1 of 2
---	---------------------------------------	-------------

10190000	<b>DATA SHEET</b>	
Valid from: 31.05.2023	<b>EPIC® H-BE 6 SS / H-BE 6 BS DR</b>	

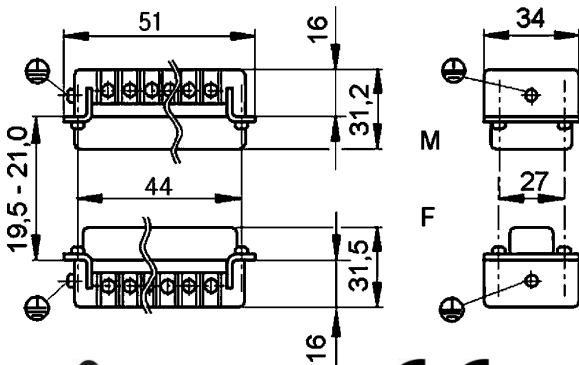
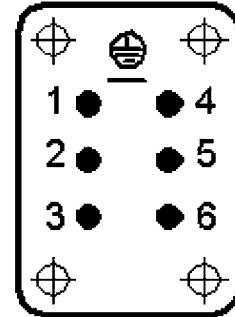
### Technical Drawings



**M**



**F**



Robust



Temperature-resistant

### Info

Multifunctional insert for versatile applications  
Screw, crimp, cage clamp and Push-In version - freely combinable

### Application range

Mechanical engineering  
Light & sound technology  
Plastics industry

### Remark

Photographs are not to scale and do not represent detailed images of the respective products.

Creator: THB01/PDP Released: IVSE1/PDP	Document: DB10190000EN Version: 06	Page 2 of 2
---	---------------------------------------	-------------