


| | | |
|---------------------------|----------------------------|---|
| 55503624 | DATA SHEET |  |
| Valid from: 03.07.2018 | SILVYN® FCE COMPACT | |

SILVYN® FCE COMPACT is a conduit gland made of nickel plated brass and is resistant to corrosion, UV and ozone. The gland is suitable to the protection conduits SILVYN® FCE-V0 and SILVYN® FCE-LFH.



Material:

| | |
|---------------|---------------------|
| Body | Nickel plated brass |
| Sleeve | Nickel plated brass |
| Pressure ring | Nickel plated brass |
| Nut | Nickel plated brass |
| Sealing | NBR |
| O-Ring | EPDM |

Technical Features:

| | |
|--------------------|---|
| Connecting thread | M12x1,5 up to M40x1,5 |
| Nominal wide | NW 12 up to NW40 |
| Protection class | IP68 acc. to DIN EN 60529 |
| Temperature range: | Depending on the used conduit -45°C up to +105°C |

Additional features:

| | |
|-------------------------|------------------|
| Fire Classification | V0 acc. to UL 94 |
| Rugged | |
| Resistant to corrosion | |
| UV- and Ozone resistant | |

Color:

Metallic shiny



Approbation:


Reference standards:

EN 61386-1

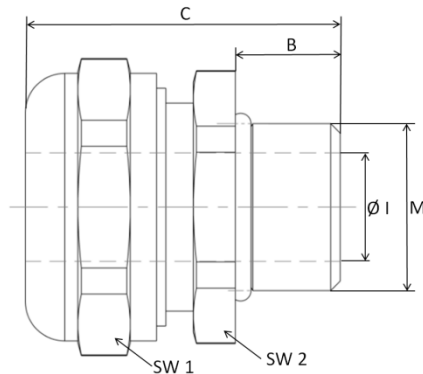
Suitable conduits:

SILVYN® FCE-V0
SILVYN® FCE-LFH

| | | |
|--|---------------------------------------|-------------|
| Creator: MAU1/PDP Released: DAMU1/PDP | Document: DB55503624EN Version: 01 | Page 1 of 2 |
|--|---------------------------------------|-------------|

| | | |
|---------------------------|----------------------------|---|
| 55503624 | DATA SHEET |  |
| Valid from: 03.07.2018 | SILVYN® FCE COMPACT | |

Product drawing:



Dimension table:

| Part No. | NW | Thread M | Thread length B mm | Inner Diameter Ø I mm | Length C mm | SW 1 | SW 2 | Weight Kg/100 |
|-----------|----|----------|--------------------|-----------------------|-------------|------|------|---------------|
| 5550 3624 | 12 | M12x1,5 | 10 | 8,5 | 31 | 22 | 20 | 3,8 |
| 5550 3625 | 16 | M16x1,5 | 10 | 11,2 | 30 | 26 | 24 | 4,2 |
| 5550 3626 | 16 | M20x1,5 | 10 | 11,2 | 30 | 26 | 24 | 4,4 |
| 5550 3627 | 20 | M20x1,5 | 10 | 15,2 | 32 | 29 | 27 | 5,0 |
| 5550 3628 | 25 | M25x1,5 | 10 | 19,2 | 33 | 35 | 33 | 7,4 |
| 6180 3855 | 32 | M32x1,5 | 12 | 25,9 | 36 | 45 | 44 | 13,9 |
| 6180 3856 | 40 | M40x1,5 | 14 | 34,5 | 45 | 59 | 55 | 18,8 |

For more information please see our current catalogue. Please do not hesitate to contact our laboratory if there are any questions regarding resistance against aggressive agents and special oil.

| | | |
|--|---------------------------------------|-------------|
| Creator: MAU1/PDP Released: DAMU1/PDP | Document: DB55503624EN Version: 01 | Page 2 of 2 |
|--|---------------------------------------|-------------|