
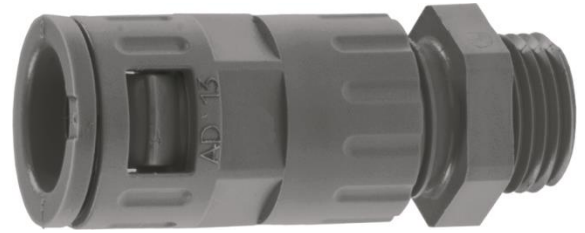


5550 0800	<b>DATA SHEET</b>	
Valid from: 03.07.2018	<b>SILVYN® KLICK GPZ-M</b>	

SILVYN® KLICK GPZ-M is a one piece polyamide cable conduit gland, with the double function sealing and strain relief, for corrugated conduits and cables. By the push-in-lock is the assembling simple, the dismounting takes place by moving the lock sleeve. SILVYN® KLICK GPZ-M can used in the statically and dynamically machine and plant constructions, where cables and lines need an extra strain relief and sealing.



**Material:**

Body Polyamide  
Sealing TPE

**Technical Features:**

Connecting thread M12x1,5 up to M63x1,5 acc. to EN 60423  
Nominal wide NW 10 up to NW 54,5  
Protection class IP68 acc. to EN 60529  
IP69K acc. to DIN 40050 T9  
Depending on the used conduit  
Temperature range -40°C up to +120°C

**Additional features:**

Fire classification V2 acc. to UL94  
Flammability lass S1 acc. to DIN 5510-2  
Fire behaviour HL2 acc. to EN 45545-2  
Free of halogen und phosphor  
UV-Resistant  
SILVYN® KLICK GPZ-M black

**Colour:**

Grey  
Black

**Approbation:**




**Reference standards:**

EN 61386-1

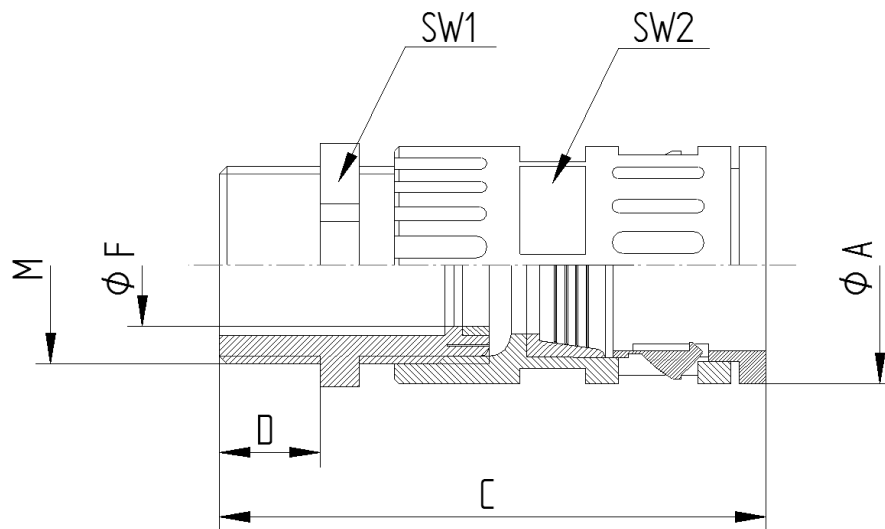
**Suitable conduits:**

SILVYN® RILL PA 6  
SILVYN® RILL PA 12

Creator: MAU1/PDP Released: DAMU1/PDP	Document: DB55500800EN Version: 05	Page 1 of 2
--	---------------------------------------	-------------

5550 0800	<b>DATA SHEET</b>	
Valid from: 03.07.2018	<b>SILVYN® KLICK GPZ-M</b>	

**Product drawing:**



**Dimension table:**

Part No.	Nominal width NW	Thread M	Thread length D mm	Length C mm	Clamping range ØF mm	Outer diameter Ø A mm	SW 1	SW 2	Weight kg/100
<b>SILVYN KLICK GPZ-M grey</b>									
5550 0800	10	M12x1,5	8,0	51	3,0 – 6,5	17,0	16	15	0,8
5550 0810	13	M16x1,5	8,0	53	5,0 – 9,5	20,0	18	20	1,3
5550 0820	15,8	M20x1,5	8,0	59	8,0 – 13,0	23,0	21	24	1,5
5550 0830	21,2	M25x1,5	8,0	70	11,0 – 17,0	33,5	7	29	3,0
5550 0840	28,5	M32x1,5	10,0	82	15,0 – 21,0	37,0	34	36	3,8
5550 0850	34,5	M40x1,5	10,0	85	19,0 – 28,0	44,0	40	46	5,7
5550 0860	42,5	M50x1,5	12,0	141	27,0 – 35,0	58,0	55	55	11,2
5550 0870	54,5	M63x1,5	12,0	145	32,0 – 42,0	68,0	65	68	13,2
<b>SILVYN KLICK GPZ-M black</b>									
5550 0805	10	M12x1,5	8,0	51	3,0 – 6,5	17,0	16	15	0,8
5550 0815	13	M16x1,5	8,0	53	5,0 – 9,5	20,0	18	20	1,3
5550 0825	15,8	M20x1,5	8,0	59	8,0 – 13,0	23,0	21	24	1,5
5550 0835	21,2	M25x1,5	8,0	70	11,0 – 17,0	33,5	7	29	3,0
5550 0845	28,5	M32x1,5	10,0	82	15,0 – 21,0	37,0	34	36	3,8
5550 0855	34,5	M40x1,5	10,0	85	19,0 – 28,0	44,0	40	46	5,7
5550 0865	42,5	M50x1,5	12,0	141	27,0 – 35,0	58,0	55	55	11,2
5550 0875	54,5	M63x1,5	12,0	145	32,0 – 42,0	68,0	65	68	13,2

For more information please see our current catalogue. Please do not hesitate to contact our laboratory if there are any questions regarding resistance against aggressive agents and special oil.

Creator: MAU1/PDP Released: DAMU1/PDP	Document: DB55500800EN Version: 05	Page 2 of 2
--	---------------------------------------	-------------