

52001877	DATA SHEET	
Valid from: 03.02.2020	SKINDICHT® MINI COLD	

The SKINDICHT® MINI COLD is a cable gland made of nickel-plated brass, which guarantees the safe mounting of cables with less diameter although its low installation height.

The use is predominantly in signal transmission, data transfer, measurement, control technology as well as in medical technology and communications engineering.



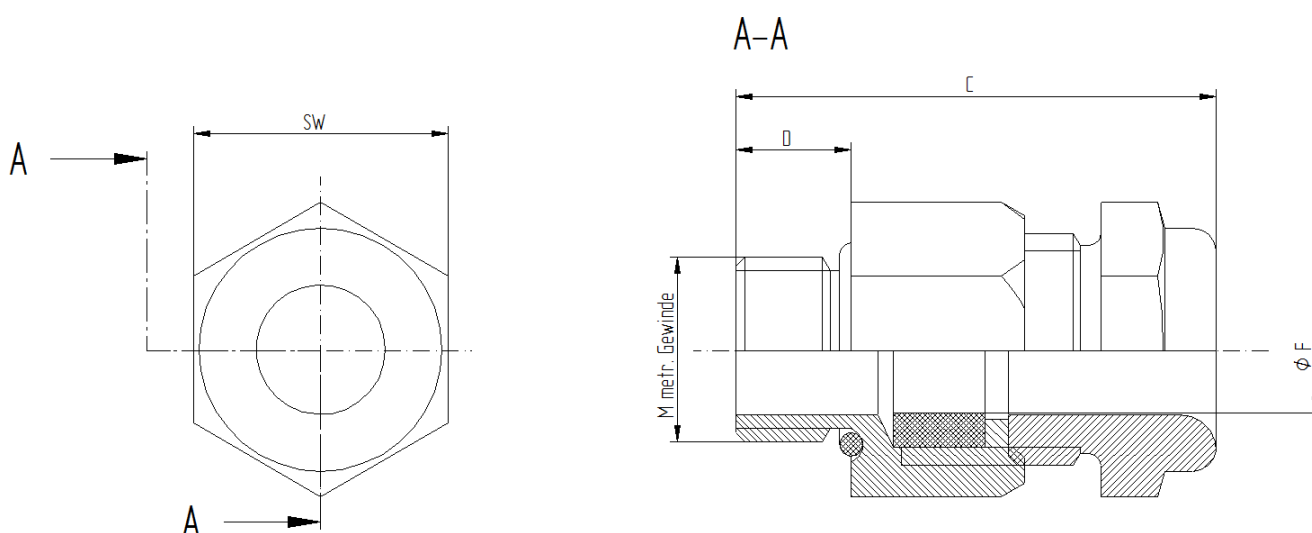
Components:

Gland body	Brass, nickel-plated
Pressure screw	Brass, nickel-plated
Pressure washer	Brass, nickel-plated
Sealing ring	Silicone
O-ring	Silicone

Technical features:

Connecting thread	M6x1, M8x1 and M10x1
Protection class	IP 66, acc. to DIN EN 60529 IP 68 - 5 bar / 30 min, acc. to DIN EN 60529
Strain relief	M6x1 and M8x1 Retention acc. to DIN EN 62444 M10x1 Category A acc. to DIN EN 62444
Temperature range	-60°C up to +100°C

Norm References:



Thread	SW	ØF mm	C		D mm	Clamping range	Part No.
			min.	max.			
M 6x1	9	3	16,7	19,7	5	2 - 3	5200 1877
M 8x1	11	5,5	17,2	20,5	5	3,5 - 5,0	5200 1878
M 10x1	14	7,4	18,3	22,3	5	5,5 - 7	5200 1879

Creator: MAU1 /PDP
Released: DAMU1/PDP

Document: DB52001877EN
Version: 00

Page 1 of 1