
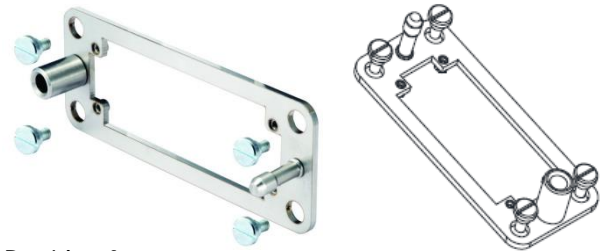


44429442	DATA SHEET	
Valid from: 27.11.2020	EPIC® H-B 16 DF	

Description

Docking frame for float mounting of rectangular inserts of the housing size H-B 16.
Mounting system for control cabinets.



General characteristics

Series:	Docking frame
Size:	H-B 16
Insertion area:	
x-Axis:	+/-1,5mm
y-Axis:	+/-1,5mm
Cycles of mechanical operation :	>500
Weight:	94g

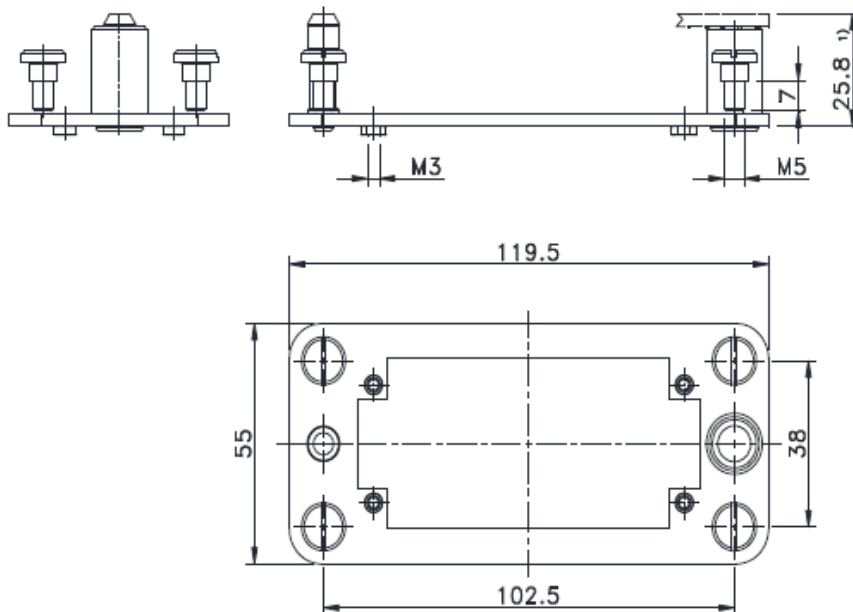
Materials and surfaces

Frame:	Stainless steel
Screws:	Stainless steel

Scope of delivery


- 1 Frame
- 4 Screws for mounting the frame

Technical drawings and dimensions

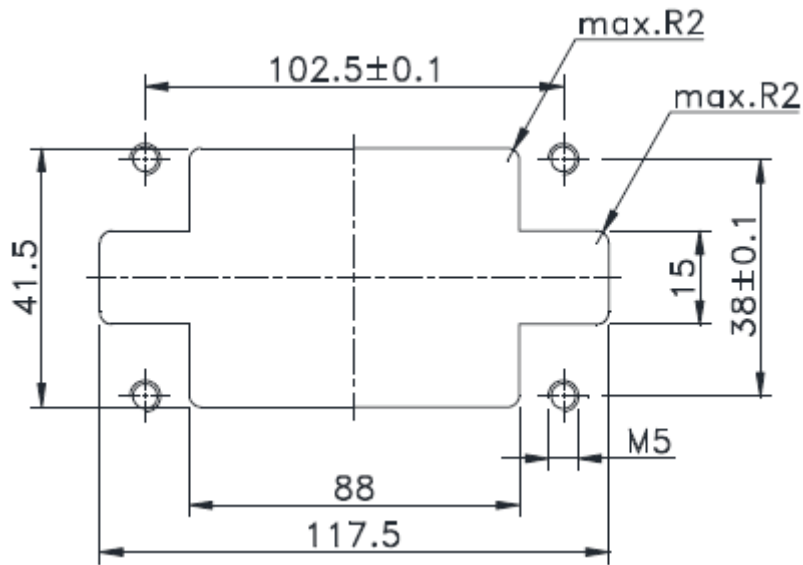


1) Distance for Contacts max. 27mm

Creator: STKU3/PDP Released: IVSE1/PDP	Document: DB44429442EN Version: 02	Page 1 of 2
---	---------------------------------------	-------------

44429442	DATA SHEET	
Valid from: 27.11.2020	EPIC® H-B 16 DF	

Mounting cut-out



Automation



Industrial machinery and plant engineering



Mechanical resistance

Application range

Control cabinets, wind turbines

Remark

Photographs are not to scale and do not represent detailed images of the respective products.

Creator: STKU3/PDP Released: IVSE1/PDP	Document: DB44429442EN Version: 02	Page 2 of 2
---	---------------------------------------	-------------