

44424032	DATA SHEET
Valid from: 15.12.2020	POWER MODULAR MC 10.0 MACHINED CONTACTS

Description

- For inserts and modules of the rectangular connectors MCS-HCC1 / MCB-HCC1



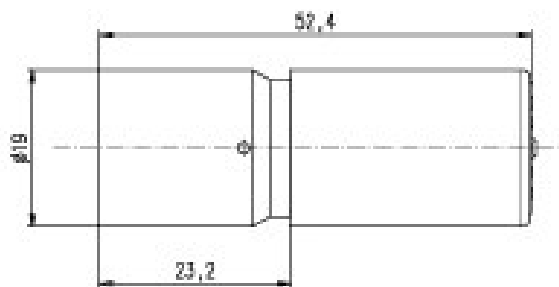
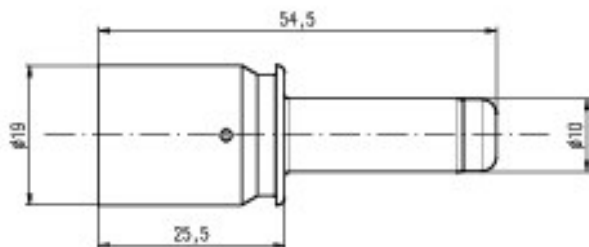
Technical Data

Contact resistance:	< 1 mOhm
Contacts:	Copper alloy, hard silver-plated
Cycle of mechanical operation:	500

Article-Number	Article	Inserts	Version	Cross-section(mm ²)	Surface
Contacts					
44424032*	Modular SCEM AG 50 D=10.0	Crimping contacts for HHC1 modules	Male	50	Ag
44424035*	Modular BCEM AG 50 D=10.0	Crimping contacts for HHC1 modules	Female	50	Ag
44424033*	Modular SCEM AG 70 D=10.0	Crimping contacts for HHC1 modules	Male	70	Ag
44424036*	Modular BCEM AG 70 D=10.0	Crimping contacts for HHC1 modules	Female	70	Ag
44424034*	Modular SCEM AG 95 D=10.0	Crimping contacts for HHC1 modules	Male	95	Ag
44424037*	Modular BCEM AG 95 D=10.0	Crimping contacts for HHC1 modules	Female	95	Ag
Crimping die for contacts of HHC1 modules					
44424038*	TOOL DIE D=10.0/50sqmm	Crimping dies		50	
44424039*	TOOL DIE D=10.0/70sqmm	Crimping dies		70	
44424040*	TOOL DIE D=10.0/95sqmm	Crimping dies		95	

44424032	DATA SHEET
Valid from: 15.12.2020	POWER MODULAR MC 10.0 MACHINED CONTACTS

Technical Drawing



Info

Crimping contacts for maximum cross sections and currents

Remark

Photographs are not to scale and do not represent detailed images of the respective products.

* Trade product, no Lapp product