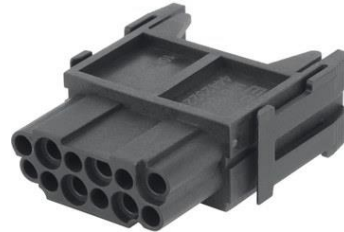


44423223	<b>DATA SHEET</b>	
Valid from: 17.09.2018	<b>EPIC® MHB 12 CM</b>	

## Description

- Module 12-pin for control signals
- Crimp connection for permanent vibration-proof contact
- EPIC® MH system is mateable with the market standard
- The mix of different functions is one plug guarantees high flexibility



## General characteristics

Contact type	socket
Number of contacts	12
Mating cycles	500
Material	Polyamide, glass fibre-reinforced
Inflammability class acc. with UL 94	V0
Pollution degree	3
Temperature range	-40° C to +125° C
Termination methods	crimp termination: 0.14 – 2.50 mm <sup>2</sup> EPIC® MH 6 multi-frame EPIC® MH 10 multi-frame EPIC® MH 16 multi-frame EPIC® MH 24 multi-frame
Suitable frame	EPIC® H-D 1.6 machined contacts
Suitable contacts	

## Electrical characteristics

Rated voltage	250 V Conductor-PE; 400 V Conductor-Conductor
Contact resistance	< 5 mΩ
Rated impuls voltage	4 kV
Rated current	10 A

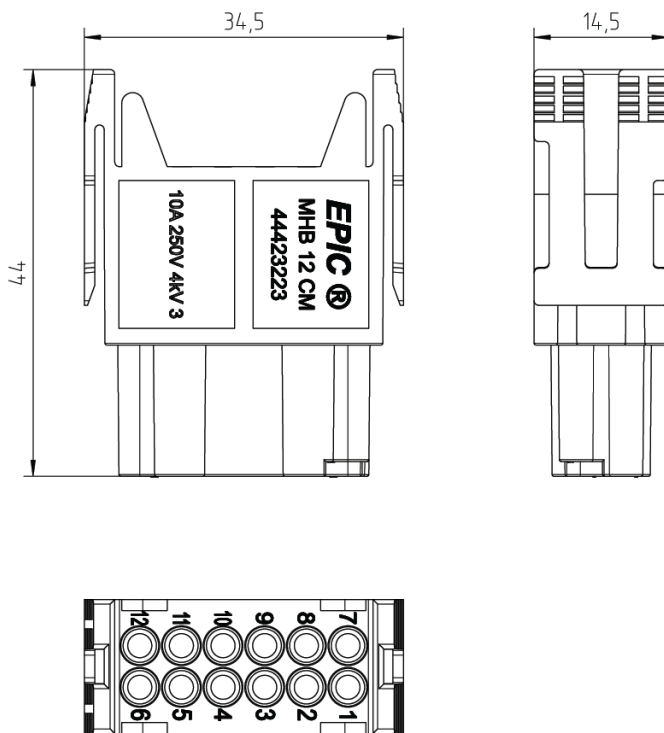
## Standards/Approvals

Fire protection on railway vehicles	according EN 45545-2 requirement sets R22 and R23 hazard level HL1, HL2 and HL3
-------------------------------------	---

Creator: JOKR1/PDP Released: IVSE1/PDP	Document: DB44423223EN Version: 02	Page 1 of 2
---	---------------------------------------	-------------

44423223	<b>DATA SHEET</b>	
Valid from: 17.09.2018	<b>EPIC® MHB 12 CM</b>	

## Drawings



## Note

Photographs are not to scale and do not represent detailed images of the respective products.

Creator: JOKR1/PDP Released: IVSE1/PDP	Document: DB44423223EN Version: 02	Page 2 of 2
---	---------------------------------------	-------------