
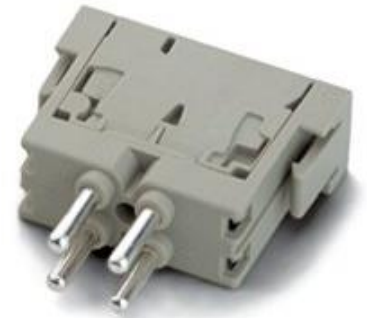


|                           |  |   |
|---------------------------|--|---|
| 10399600                  | <b>DATA SHEET</b>                          |  |
| Valid from:<br>24.02.2020 | <b>EPIC® MCS/MCB 4 F CAGE CLAMP 4 POLE</b> |   |

## Description

- The mixed assembly guarantees high flexibility. For applications in mechanical and plant engineering, for printing machines and slide-in technology.
- Assembly of individual connectors, suitable for different applications



## General Characteristics

|                     |   |
|---------------------|---|
| Series              | MC Module   |
| Version             | Male / Female (Article 10399700)  |
| Number of Contacts  | 4   |
| Termination Methods | Cage Clamp Termination: 0.5 – 2.5 mm <sup>2</sup> <sup>(1)</sup>  |
| Temperature Range   | -40°C to +100°C, short-term up to +125°C  |
|                     | <sup>(1)</sup> Up to and including 0.75 mm <sup>2</sup> a ferrule must be used. Above 0.75 mm <sup>2</sup> the use of a ferrule is recommended. |

| Artikel No. | Module | VPE |
|-------------|--------|-----|
| 10399600    | Male   | 10  |
| 10399700    | Female | 10  |

## Mechanical Characteristics

|                                |     |
|--------------------------------|-----|
| Cycles of mechanical operation | 100 |
|--------------------------------|-----|

## Electrical Characteristics

|                    |            |
|--------------------|------------|
| Rated Voltage      | 400 V      |
| Rated Current      | 14 A       |
| Contact resistance | 1,5-4 mOhm |
| Pollution Degree   | 3          |

## Materials and Surfaces

|                                       |                                  |
|---------------------------------------|----------------------------------|
| Contact                               | Copper alloy, hard silver-plated |
| Module                                | PC                               |
| Flammability Class according to UL 94 | V0                               |


## Approvals

|                          |        |
|--------------------------|--------|
| UL-Approval, E-File-Numb | E75770 |
|--------------------------|--------|


## Standard

|                 |                    |
|-----------------|--------------------|
| Safety Standard | IEC 61984, UL 1977 |
|-----------------|--------------------|

|   |                                       |             |
|---|---------------------------------------|-------------|
| Creator: MANA2/PDP<br>Released: IVSE1/PDP | Document: DB10399600EN<br>Version: 02 | Page 1 of 3 |
|---|---------------------------------------|-------------|

|                           |   |   |
|---------------------------|---|---|
| 10399600                  | <b>DATA SHEET</b>                                     |  |
| Valid from:<br>24.02.2020 | <b>EPIC<sup>®</sup> MCS/MCB 4 F CAGE CLAMP 4 POLE</b> |   |

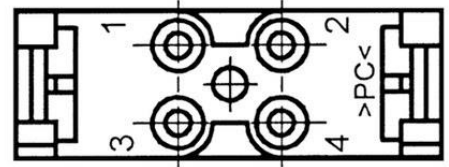
|   |                                       |             |
|---|---------------------------------------|-------------|
| Creator: MANA2/PDP<br>Released: IVSE1/PDP | Document: DB10399600EN<br>Version: 02 | Page 2 of 3 |
|---|---------------------------------------|-------------|

|                           |  |   |
|---------------------------|--|---|
| 10399600                  | <b>DATA SHEET</b>                          |  |
| Valid from:<br>24.02.2020 | <b>EPIC® MCS/MCB 4 F CAGE CLAMP 4 POLE</b> |   |

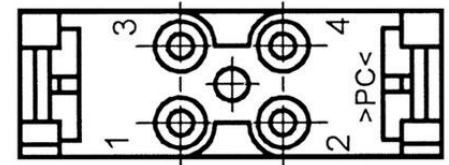
### Technical Drawing



M



F



Automation



Industrial machinery and plant engineering



Wind Energy

### Info

Fast connection by cage spring

### Application range

Plant engineering  
Printing machines  
Control engineering

### Remark

Photographs are not to scale and do not represent detailed images of the respective products.

|   |                                       |             |
|---|---------------------------------------|-------------|
| Creator: MANA2/PDP<br>Released: IVSE1/PDP | Document: DB10399600EN<br>Version: 02 | Page 3 of 3 |
|---|---------------------------------------|-------------|